

PAPER CRAFT

<http://www.canon.com/c-park/en/>



View of completed model

Total length : approx. 7 m; weight : approx. 1.5 t; taxonomy : Order Plesiosauria, suborder Elasmosauridae
Period : late Cretaceous period (approximately 85 million years ago) ; habitat : Japan

Futabasaurus

Editor :  THE NATIONAL SCIENCE MUSEUM
国立科学博物館

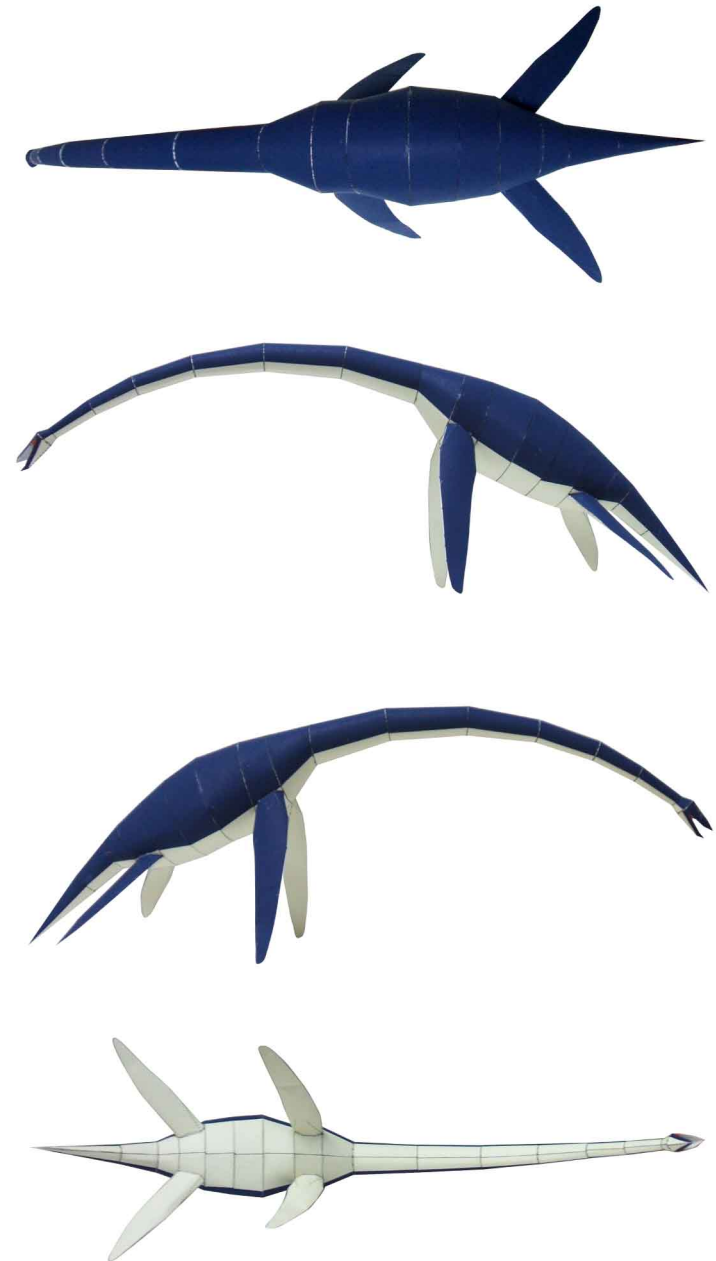
Futabasaurus was a marine reptile related to the plesiosaurus that lived in the seas near Japan in the late Cretaceous period of the Mesozoic era. Plesiosaurs are not considered dinosaurs; rather, they were reptiles, more like lizards. The name *Futabasaurus* reflects the discovery of its fossils in the Futaba strata in the city of Iwaki in Fukushima Prefecture of Japan in 1968, by Tadashi Suzuki, a high-school student at the time. In 2006, the creature was given the scientific name *Futabasaurus suzukii*, the sole member of a new genus. Some *Futabasaurus* fossils have been found to show signs of shark teeth. While *Futabasaurus* may indeed have been attacked by sharks, it also is possible that sharks simply gnawed on the body of a *Futabasaurus* once it was already dead.

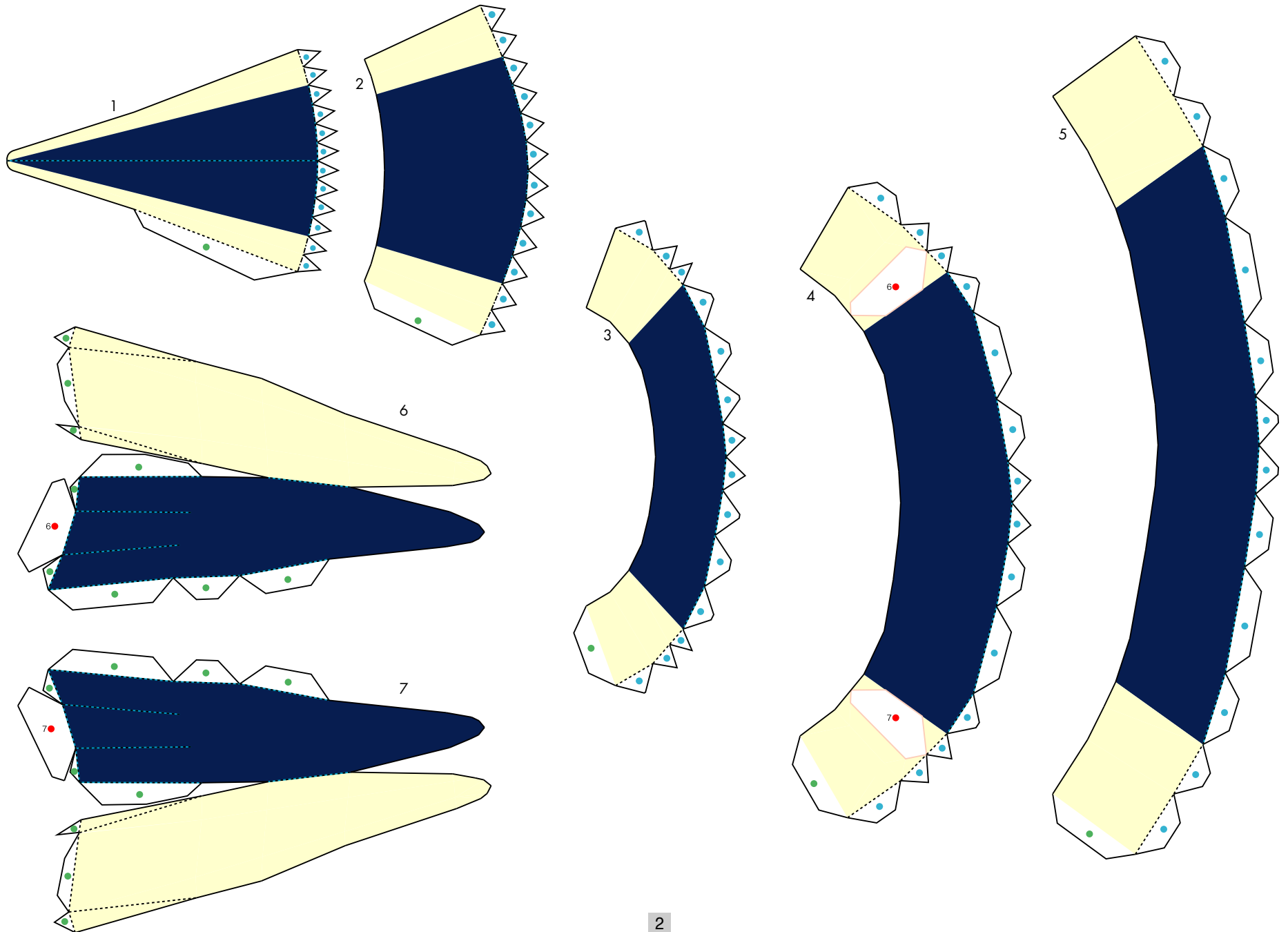
* This model was designed for Papercraft and may differ from the original in some respects.

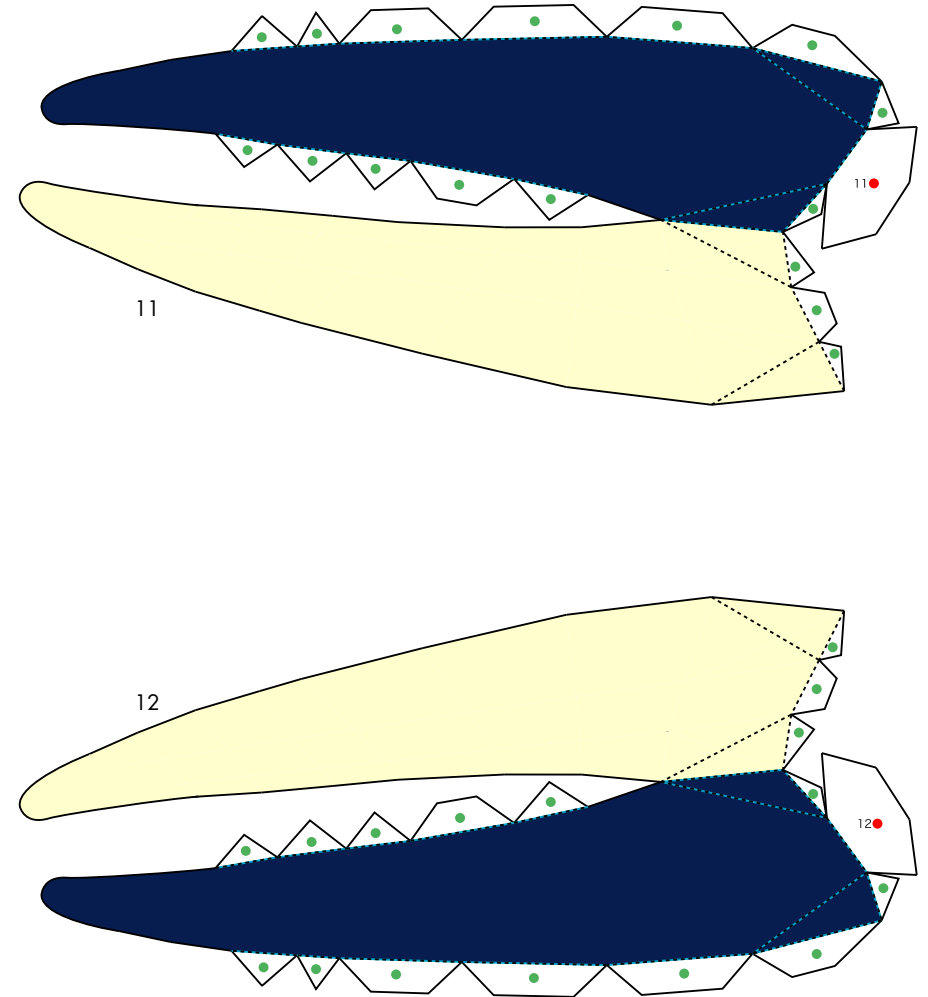
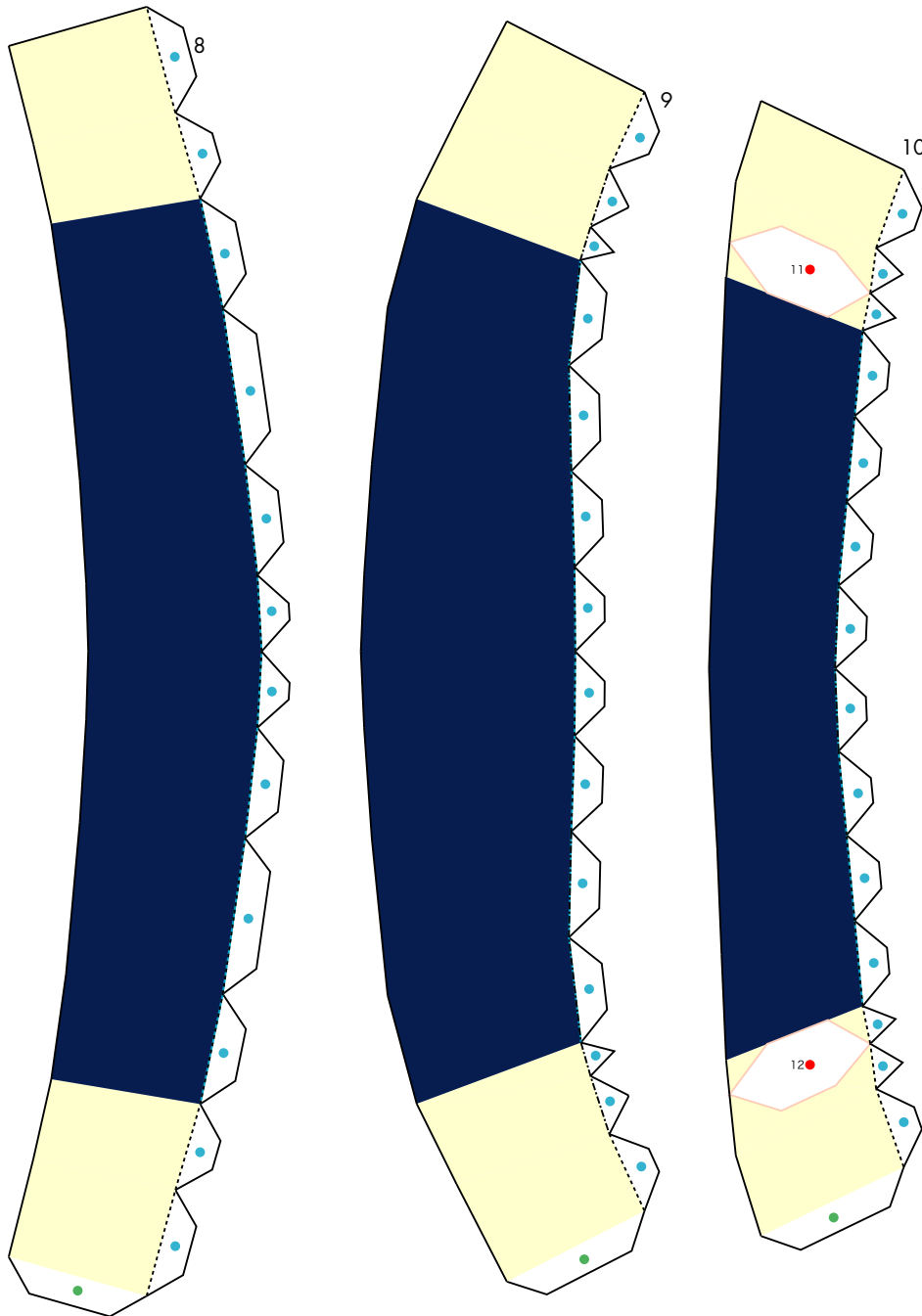
■ Parts list (pattern) : Four A4 sheets (No. 1 to No. 4)

■ No. of Parts : 23

* Build the model by carefully reading the Assembly Instructions, in the parts sheet page order.







Futabasaurus : Pattern

© Canon Inc. © Y. Watanabe

